

Courtesy Of Ralph E Soldan Of Homewise Realty

\$1,299,000 - 6138 50 Avenue, Vegreville

MLS® #E4373035

\$1,299,000

0 Bedroom, 0.00 Bathroom,
Land Commercial on 0.00 Acres

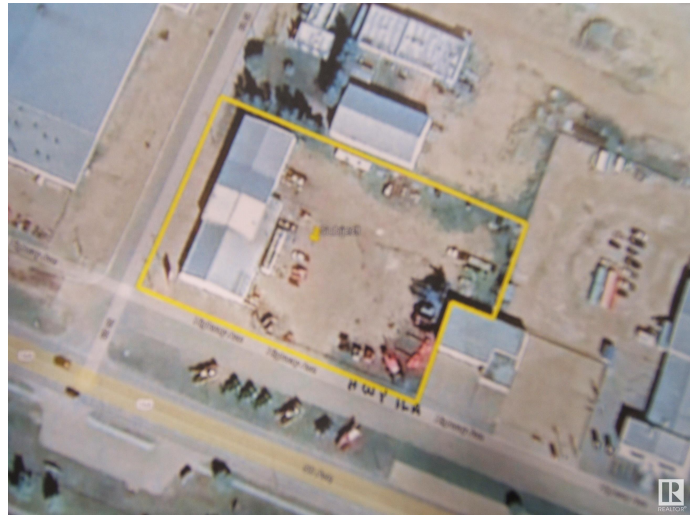
Vegreville, Vegreville, AB

Excellent Opportunity to Invest on a Prime Property Located at 6138-50 ave. Vegreville, Alberta. Great Exposure as Highway Frontage, Located on Highway 16A, Close to a Ford Dealership, Chrysler Dealership, The Brick Warehouse and only 1 Block from Secondary Highway 857. 1.72 Acre Fenced Lot Features a 13000 sq. ft. Metal Clad Building. Building is Presently Occupied by an Agricultural Equipment Dealership with 4 Years left on a 5 Year Lease. Building Features Front Reception Area, 4 Offices, Parts Department, Copier/Storage Room, Lunchroom and Washroom. Back Part of Building Features 2 Offices, Service Desk, Washroom, Mezzanine with Storage and Lunchroom and a Service Shop for Large Equipment. Possibilities for Property in the Future are Vast. Excellent Income Opportunity with Present Tennant. Must View Property!

Built in 1977

Essential Information

MLS® #	E4373035
Price	\$1,299,000
Bathrooms	0.00
Acres	0.00
Year Built	1977
Type	Land Commercial



Status Active

Community Information

Address 6138 50 Avenue
Area Vegreville
Subdivision Vegreville
City Vegreville
County ALBERTA
Province AB
Postal Code T9C 1N6

Exterior

Exterior Brick, Steel Frame
Construction Brick, Steel Frame

Additional Information

Date Listed February 10th, 2024
Days on Market 594
Zoning Zone 60

DATA IS DEEMED RELIABLE BUT IS NOT GUARANTEED ACCURATE BY THE REALTORS® ASSOCIATION OF EDMONTON. COPYRIGHT 2025 BY THE REALTORS® ASSOCIATION OF EDMONTON. ALL RIGHTS RESERVED. Trademarks are owned or controlled by the Canadian Real Estate Association (CREA) and identify real estate professionals who are members of CREA (REALTOR®, REALTORS®) and/or the quality of services they provide (MLS®, Multiple Listing Service®)

Listing information last updated on September 26th, 2025 at 7:32am MDT