

Courtesy Of Dave J Ryan Of RE/MAX Real Estate

# **\$129,900 - 1275 53222 Rge Rd 272, Rural Parkland County**

MLS® #E4446454

**\$129,900**

3 Bedroom, 2.00 Bathroom, 1,087 sqft

Land Lease Community on 0.00 Acres

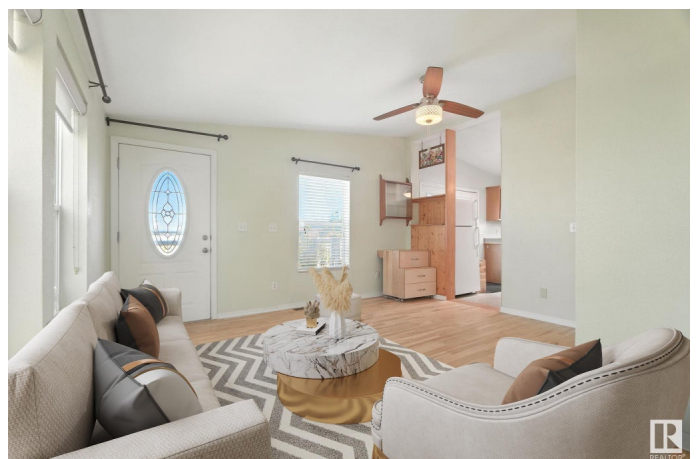
Parkland Village, Rural Parkland County, AB

Get into ownership with this beautiful home in Parkland Village. Built in 2007 this home has loads of great features! Located on a quiet corner lot. Feel at home as you walk in the door to the large living room with tons of windows to maximize the natural light. Great eat in kitchen with good cabinet space. Master bedroom has plenty of space for furniture plus a 3pc ensuite and a walk in closet. It even has it's own deck! 2 more bedrooms are great for kids, guests or a home office. Laundry is on the same level too! CENTRAL A/C! Large deck is perfect to enjoy the sunsets to the west. Off street parking for 2 vehicles and extra storage in the shed on site! Easy access to Yellowhead & Spruce Grove. some photos are virtually staged

Built in 2007

## **Essential Information**

MLS® #	E4446454
Price	\$129,900
Bedrooms	3
Bathrooms	2.00
Full Baths	2
Square Footage	1,087
Acres	0.00



Year Built	2007
Type	Land Lease Community
Sub-Type	Detached Single Family
Style	Bungalow
Status	Active

### Community Information

Address	1275 53222 Rge Rd 272
Area	Rural Parkland County
Subdivision	Parkland Village
City	Rural Parkland County
County	ALBERTA
Province	AB
Postal Code	T7X 4K4

### Amenities

Parking	2 Outdoor Stalls, Parking Pad Cement/Paved
---------	--

### Interior

Interior Features	ensuite bathroom
Appliances	Air Conditioning-Central, Dryer, Hood Fan, Oven-Microwave, Refrigerator, Stove-Electric, Washer
Heating	Forced Air-1, Natural Gas

### Exterior

Exterior	Modular
Construction	Modular
Foundation	Block

### Additional Information

Date Listed	July 8th, 2025
Days on Market	8
Zoning	Zone 70

DATA IS DEEMED RELIABLE BUT IS NOT GUARANTEED ACCURATE BY THE REALTORS® ASSOCIATION OF EDMONTON. COPYRIGHT 2025 BY THE REALTORS® ASSOCIATION OF EDMONTON. ALL RIGHTS RESERVED. Trademarks are owned or controlled by the Canadian Real Estate Association (CREA) and identify real estate professionals who are members of CREA (REALTOR®, REALTORS®) and/or the quality of services they provide (MLS®, Multiple Listing Service®)

Listing information last updated on July 15th, 2025 at 9:31pm MDT